



INCRETE OF ALBANY

GEORGE BROTHERS INC

518-489-1489

14 Railroad Ave Albany NY 12205

Management



Richard George Jr. – President/Owner



Diane George – VP/Treasurer

Providing you the “**Confidence**” in knowing you are doing business with “**Specialized Professionals**”

Your Decorative & Traditional Concrete Experts

Richard has 40+ years of robust experience in the masonry and concrete industry. He started his career at an early age working and learning from the best, his father.

Diane has a background of 40+ years in both finance & business management. She joined her husband's business in early 2011.

We have been specializing in the masonry industry since 1983, Incorporating in 1999. With our focus on top-quality work and exceptional customer service our presence in the Capital Region is both recognized and sought after. Not only does Increte of Albany provide noteworthy installations to both **residential and commercial** customers, we also are the only distributor & installer of Euclid Chemical, Increte Systems, SureCrete and Proline in the Capital District.

We have an indoor showroom for (contracted)customer and a retail store (GEO CRETE Supplies) which is open to both contractors and the public.

Our service line consists of

Traditional-Regular Concrete: patios, driveways, pool decks, walkways, steps, basement floors, garage floors, etc.

Stamped Concrete: patios, driveways, pool decks, walkways, steps, etc.

Concrete Resurfacing: referred to as overlay products which can transform your old unsightly plain concrete into an elegant surface.

Epoxy Flooring: very popular for transforming your garage or basement floor and many commercial floors. Exterior Sand Epoxy is great for going over existing regular concrete areas.

Concrete staining, retaining walls and firepits are also offered along with Maintenance Services.

Concrete

The Ultimate Material

Outlasting:
Pavers-Blacktop
Slate-Wood

Our Projects
are all Steel
Reinforced



We've Replaced
Them All



Regular Concrete





What is a “SYSTEM”

- ① Reputable manufacturers of decorative concrete materials (color, stain, overlays, sealers, etc) design their products to work in conjunction with one another.
- ① Materials for surface preparation, coloring, cleaning, sealing, maintenance and even stripping are sold under one label.
- ① THIS IS KNOWN AS A SYSTEM
- ① “A SYSTEM” means the products have been tested by the manufacturer to assure compatibility

Stamped Concrete

Colors depicted in this brochure are reproductions and due to print process and lighting may vary from actual colors

Stamped Concrete System

A stamped concrete system duplicates nature's most distinctive texture with incredible realism. Unique custom looks that turn any property into a showplace.

Stamped Concrete is available in a wide array of patterns duplicating granite, slate, stone, brick and even wood. **Stamped Concrete** boasts a myriad of standard colors that challenge the eye to tell the difference between a **Stamped Concrete** slate, granite, or stone application and the real thing. What's more, **Stamped Concrete** can be installed at a fraction of the cost of conventional materials, all the while offering superior durability and requiring less maintenance. Create an aura of elegance in and around your home or property with the realistic natural beauty of **Stamped Concrete**.

Stamped Concrete Offers:

- Affluent look at an Affordable Price
- Freedom of Expression
- Increased Durability
- Low Maintenance
- Unlimited Color and Design

Applications:

- Patios
- Entryways
- Roadways
- Driveways
- Walkways
- Pool Decks



Before



After

Color Hardener vs Integral

There is a difference

Color Hardener

is color that is troweled into the surface creating a protective shell over the concrete.

The advantage of color hardener is its durability. The surface is now stronger and more wear resistant than regular concrete, the surface is also less permeable, preventing the intrusion of water, salts and other stains.

Color Hardener changes the hardness (strength) of the concrete surface over time from 4,000 PSI to 8,000 PSI.

Because color hardeners improve the strength and density of the concrete surface, they often are a good choice for exterior slabs exposed to freeze/thaw cycles and deicing salts

Color Hardener also gives you a more vibrant color as it is troweled on the surface, not thrown in the concrete truck.

Using color hardeners takes a skilled team, with the knowledge to not only work the product but work it with the concrete. This is where our talents shine. We have the experience and the team to color, stamp, and seal a project to perfection. The detail and attention given is exceptional as are our products.

“True professionals use color hardeners” (Quote from Concrete Construction magazine)

Integral

is color that is thrown into the concrete truck, dispersing the color throughout the mix.

Advantages of integral color are speed of placement and color mixed through the whole slab. Integral is an ideal solution for a difficult job site, such as when color hardeners can't be broadcast freely or there is limited access.

The challenges with integral color are the colors that can be attained. Since white cement is not readily available, all the color formulations are based on gray. With gray cement as the base, lighter and brighter colors are much harder to achieve. Some colors cannot be achieved at all.

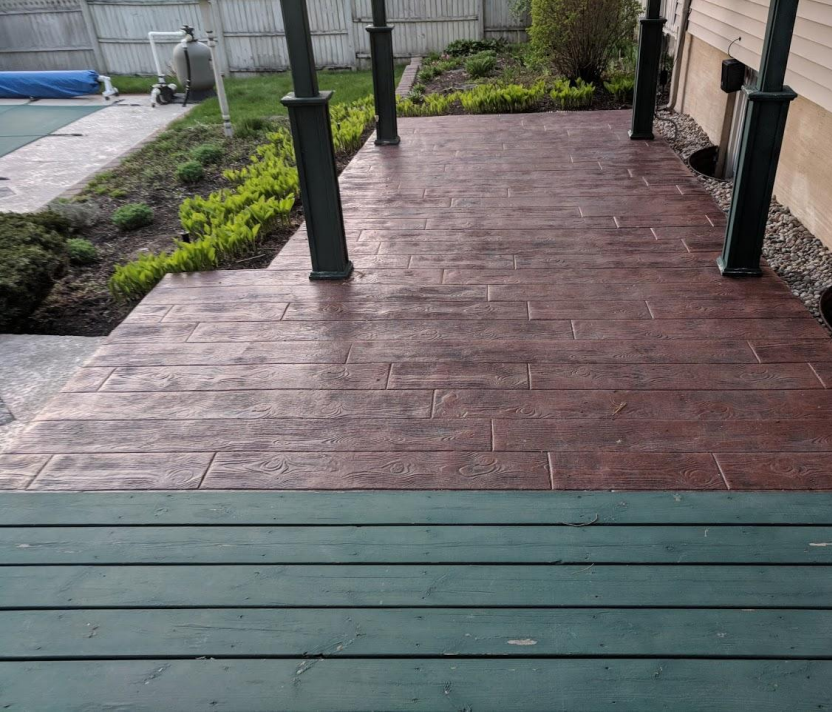
With Integral your surface strength is the same as the concrete.

MYTH: Integral is better if you get a chip because the color is mixed all the way through. While that is true that the color is all the way through, it is actually better if you use color hardener. You can match the color if you ever need to touch up a chip with color hardener. With Integral you can try to get close.

We may use Integral if the job site requires it, or if requested by the customer

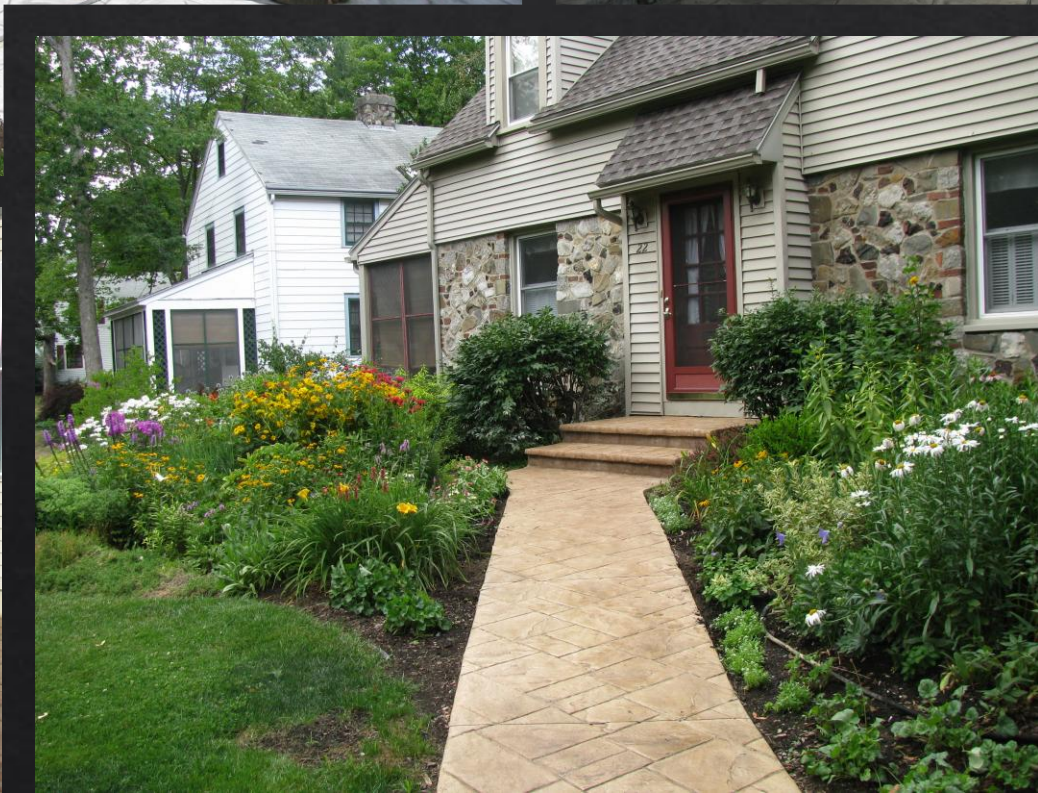
So Many Patterns & Colors

The Possibilities are
Endless











Driveway

Pattern: Old English Slate

Colors: Sun Gray / Gray Antique

Concrete driveways are becoming
more & more popular
There is nothing stronger
than
Steel Reinforced Concrete





Driveway & Sidewalk

Pattern: Running Bond Brick

Colors: Sun Gray / Charcoal Antique





Driveway

Pattern: Slate Skin with Notched Ashlar
Border

Colors: Maplewood / Gray Antique



Driveway

Pattern: Notched Ashlar

Colors: Pewter / Gray Antique



Unsealed



Sealed

Patio

Pattern: Wood Plank

Colors: Dark Gray / Charcoal Antique



Patio

Pattern: Large Random Flagstone

Colors: Sun Buff / Autumn Brown
Antique





Pattern: Old English Slate

Colors: Sungray / Gray Antique



Pattern: Herringbone Brick
Colors: Terra Cotta / Charcoal Antique

Project Before & After



Notched Ashlar
SunBuff/Sand Buff

Project Before & After's



Select Your Pattern

Patterns



Running Bond Brick



Small Notched Ashlar



Philly Blue Stone

Flagstone



Patterns



Slate Skin

Flower Rock



Patterns

Sidewalk Slate



Wood Plank



Herringbone Brick



OE Slate



Patterns



Fan

Large Notched



Blue Ridge Skin



PROLINE Patterns

Mountain Granite Skin



Large Flagstone



Italian Slate Skin



Firepits and Sitting Walls



Steps, Steps and More Steps



Textured Overlay System

Concrete Overlay

TEXTURED OVERLAY SYSTEM

The Ultimate Cover Up for plain, old or unsightly concrete, Textured Overlays are a decorative concrete overlay system designed to transform ordinary concrete with a rich textured surface.

Available in a wide array of colors they are ideal for a host of residential and commercial applications from sidewalks, and walkways, to patios, entryways and pool decks, or wherever a beautiful and highly durable surface is desired.

The unique chemistry creates an incredibly durable system with a surface strength twice that of regular concrete. It is low maintenance, and resistant to staining and mildew.

Textured Overlays-Ideal for:

- Patios & Lanais
- Pool Decks/Spa Areas
- Sidewalks
- Theme Parks
- Apartment Complexes
- Shopping Venues



Extend the life and enhance the beauty of your home or property with the low-maintenance and durability of a Textured Overlay.

Advantages:

- Durable
- Waterproof
- Low Maintenance
- Economical
- Resists Mildew
- Cool To the Touch

Before



After

Textured Overlay

Before



After



White & Pewter

Textured Overlay

Before



After

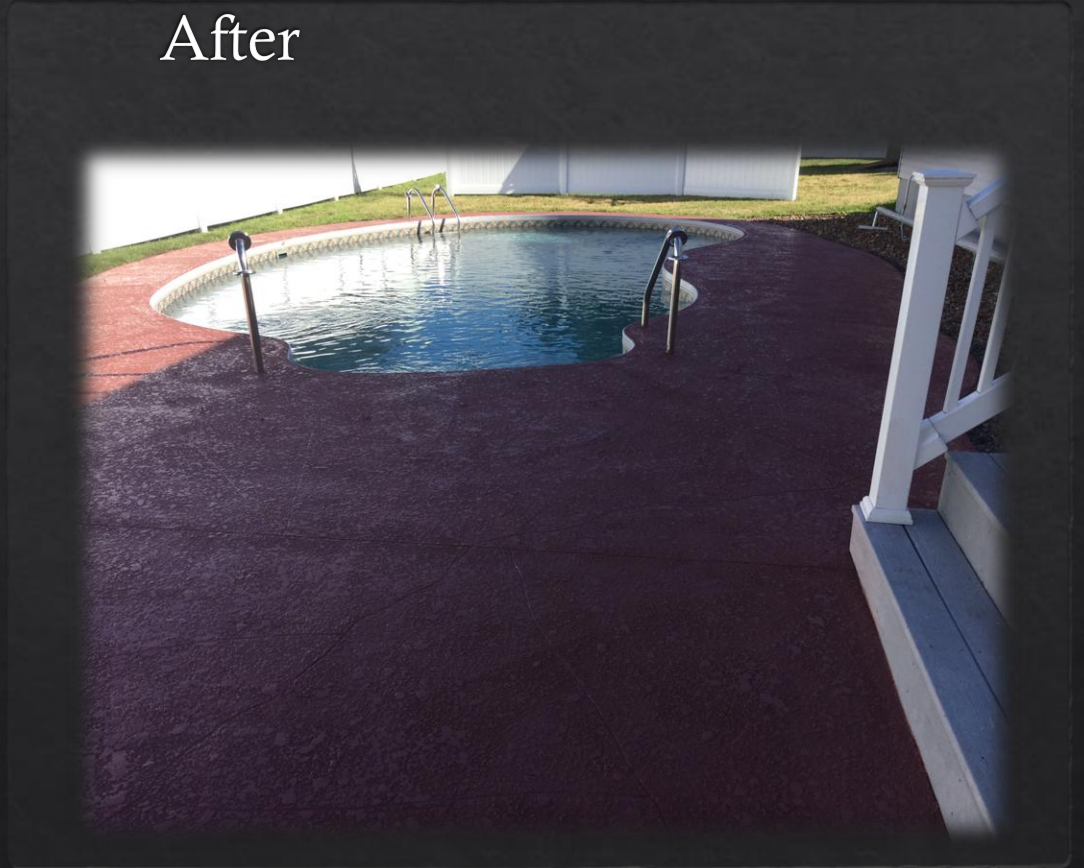


Textured Overlay

Before



After



Brick Red

Textured Overlay

After

Before



SunBuff – SandBuff - Autumn Brown

Stamped Overlay System

Concrete
STAMPED overlay

STAMPED OVERLAY SYSTEM

A stamped concrete overlay system designed as a cover-up for existing concrete surfaces.

Stamped Overlays duplicate the look of natural stone, slate and granite in deep relief patterns over existing concrete surfaces eliminating the hassle and expense of concrete replacement.

Applied at 1/4" to 3/8" of an inch over existing slabs, these overlays can be stronger and more durable than concrete making it perfect for residential and commercial use in applications ranging from pool decks, patios and driveways to hotel lobbies, shopping centers and retail stores.

Whatever your application, a stamped concrete overlay system can be colored and textured to match any design theme or specification giving you an incredibly versatile flooring system that's as durable as it is beautiful.

Applications:

- Shopping Centers
- Restaurants
- Retail Stores
- Plazas
- Hotel Entryways
- Lobbies
- Sidewalks
- Patios
- Foyers

Before



After

Stamped Overlay Porch



Before



After

Stamped Overlay Patio Area



Before



After

Stamped Overlay Pool Deck



Before



After

Stamped Overlay Patio



Before



After

Stamped Overlay Pool



Before



After

Epoxy Flake System

Epoxy Flake System Floors

Is a vinyl chip epoxy system that covers and protects concrete flooring surfaces with a colorful new look and finish.

Available in several colors. Vinyl chip blends. This durable system provides easy to maintain, stain-resistant surfaces ideal for a wide range of applications, such as garages, basements, entryways, foyers, offices, commercial and retail venues, service areas, labs, and clean rooms.

Before



After



Basement Floor



Before



After

Concession Stand



Before



After



Garage Floor

CHARCOAL FLAKE

Dog Kennel

CHARCOAL
FLAKE



Restaurant Remodel



CHARCOAL FLAKE

Metallic Systems

Metallic Epoxy Systems are an indoor, epoxy-flooring system that can be customized to produce unique, metallic-look, light reflective floors. Pigment is mixed with High Performance Epoxy.

Before



After



Exterior Epoxy Sand System



Before



After



Great Non-Slip Sand Surface

Projects Over 20 Years

Here's just a few of our many projects that have stood the test of time
With proper Installation & maintenance
decorative concrete
will give you many years of enjoyment







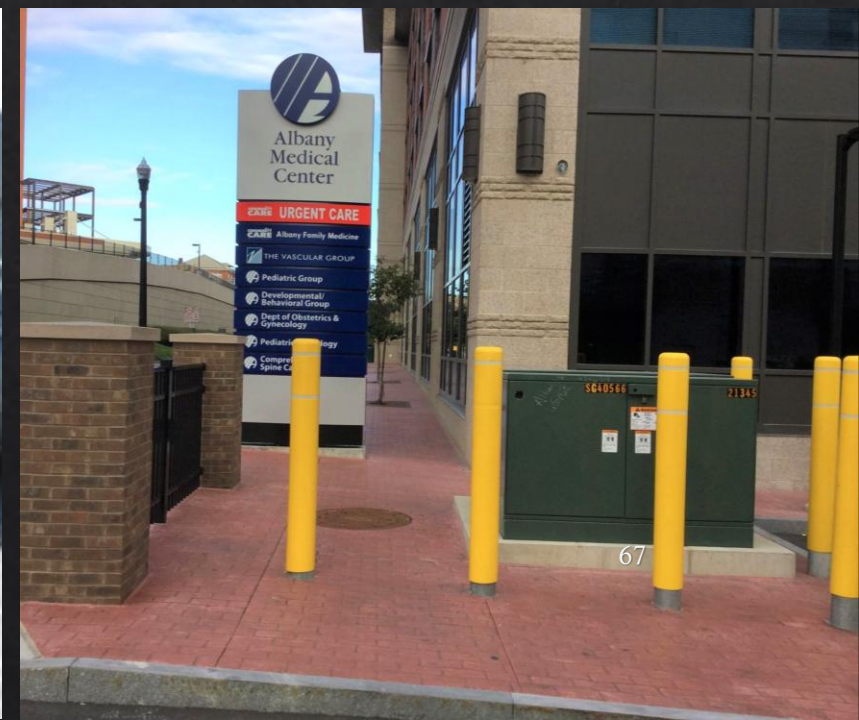
FUCCILLO



Commercial Projects

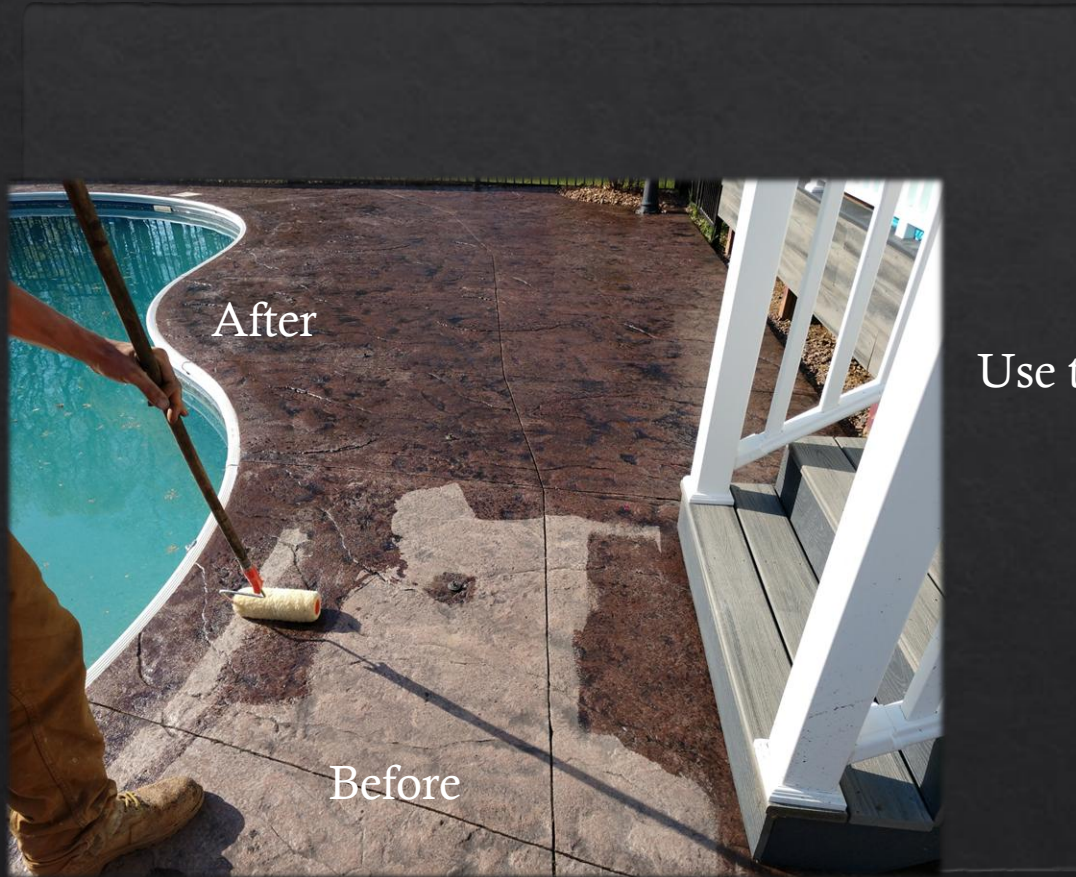








Solvent Based & Water Base Sealers Available in our Retail Store



After

Before

Dull to Vibrant

Use the BEST sealer



After

Before

When you properly maintain your concrete
You will get many years of enjoyment

EUCO RE-COVER

MICRO-FIBER ENHANCED CONCRETE RESURFACER



RENOVATE

Sprayable/Rollable Micro-Topping





(N e v e r u s e s s t o c k p h o t o s)

A n y p h o t o s u s e d b y u s o n a n y o f o u r
s i t e s o r i n o u r l i t e r a t u r e a r e o u r
p r o j e c t s

Website www.georgebrothersofalbany.com

Email increteofalbany@gmail.com